



Assembly Station AOI

- √ Assembly inspection for manual or automated assembly tasks
- √ Inspect features such as presence, orientation, shape, offset, text, color, after completing the assembly by a keypad or BarCode reading capture trigger.
- √ Max PCB (workpiece) Size 750x500mm (max), 375x250mm (min) Adjustable by optical zoom.
- √ Powered by Mek 22X AOI Software on Apple Mac™
- √ Powered by Mek Catch Software for MES gateways, Repair, SPC on Windows 10™ (optional)
- √ Overhead orthogonal camera and LED lighting system
- √ Camera resolution: 24Mp (basic)
Optional: 42Mp or 60Mp with High-definition Lens
- √ BarCode Grabbing by Camera or External BCR
- √ Flexible OK/NG display
- √ Industrial Operator Custom Keypad
- √ Kit-Based overhead frame for installation on own assembly desk

Prevent assembly defects before they move into the next process. Perform Instant-defect-curing by operator. Yield improvement by instant feedback to operators on defects.

Optimized for PCB Assembly tasks, but not limited to. Similar assembly features are useful for other disciplines.

Large PCB sizes supported. Via Optical Zoom, resolution can be increased for smaller PCB's (Workpieces).

Full compatibility with Mek's 22X AOI products such as SpectorBOX including Library, Fiducialling, Search, Text, Polarity, Bar Coding etc..

Full compatibility with Mek's Catch system with MES interfacing such as CFX, XML. Integral Storage of inspection data including images.

On-Bench no-handling Inspection. Color and glare optimized LED lighting system supports operators performing their assembly tasks by an ideal lighting environment.

Optimize resolution for your inspection task and minimal defect size. Tune resolution to minimal required 1D/2D BarCode Size. High definition lenses to capture smaller details.

(Multi) BarCode Grabbing using 22X BarCode decoding engine. External BarCode reader can be used for versatility.

Display defects by red circles on PCB Map or by classifying NG pictures. Display on remote repair station possible via Catch database (optional).

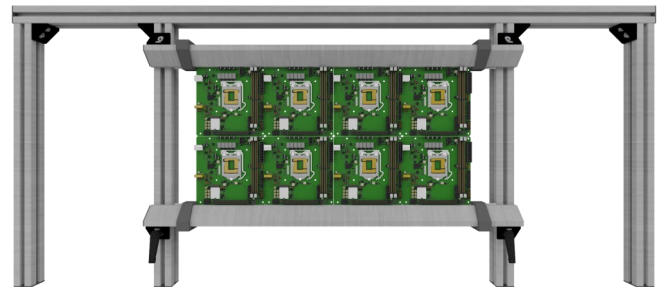
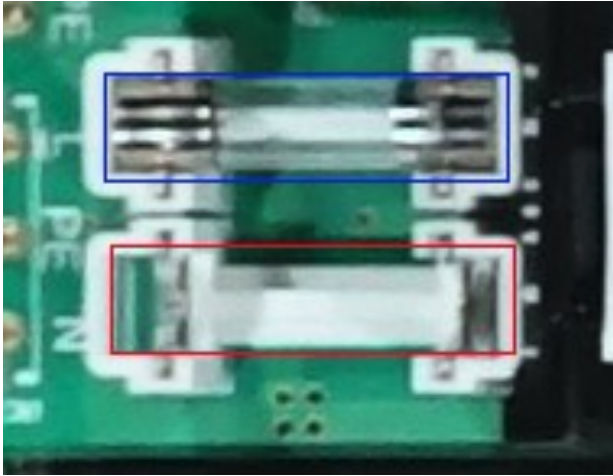
Use Keypad to trigger Capturing + inspection, Possibility for manual entry of BarCodes and classification.

Combine your preferred assembly bench with VeriSpector overhead frame. This frame holds camera, lighting system, Apple Mac, monitor etc.

Hardware and Software Features

Versatile Inspection System

Mek VeriSpector is an inspection system using the **22X Software**. It is easy to program while maintaining the power and speed of the inspection algorithms used for many years within the PCB (Printed Circuit Board) assembly industry.

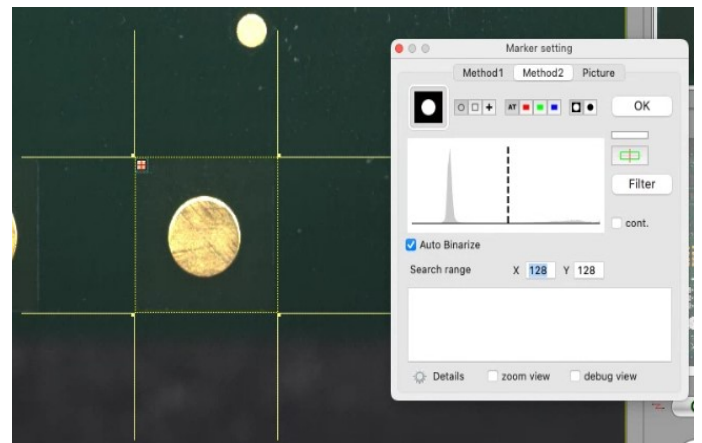
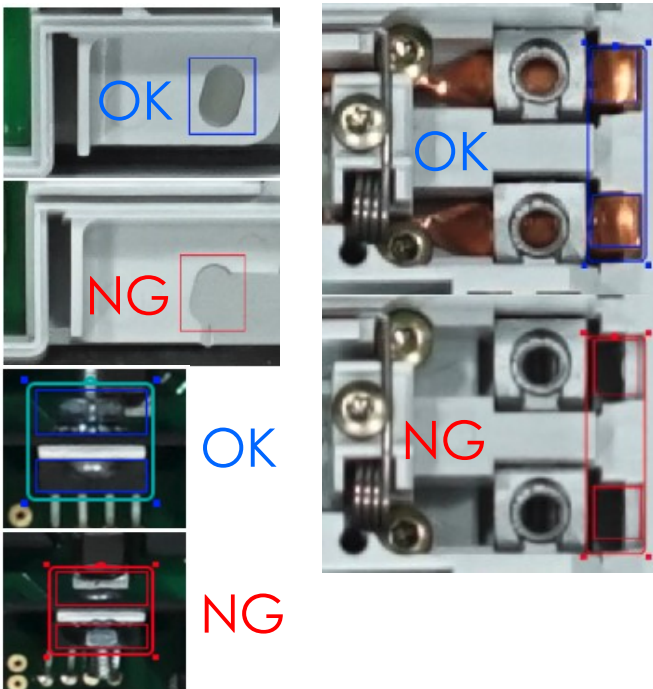


Repair On The Fly

The short inspection time (**< 5 sec**) enables the possibility to repair the product on the fly before proceeding the production process. After each inspection the operator will be presented with an extensive view of the product with all the defects highlighted.

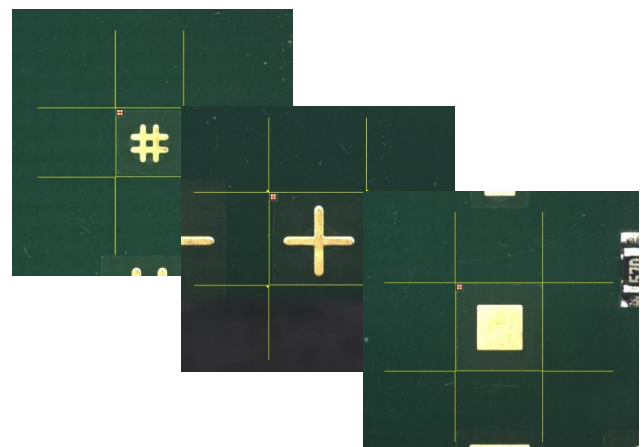
Flexible Inspection Possibilities

The VeriSpector is designed for a **wide verity** of inspection needs like presence/absence, polarity, text verification, fiducial reading, colour check, 1D and 2D barcode reading, assembly materials fittings, damaged objects, and many more.



Fiducial recognition

With the high variation capabilities of the VeriSpector the recognition of fiducials is an important aspect. Ensuring high **repeatability** of inspection programs. The VeriSpector uses the fiducial recognition algorithm provided by the **22x Software**. Ensuring that the VeriSpector can recognize a wide variety of fiducials, and when there is no fiducial available using a photo as fiducial reference.



Accurate text inspection

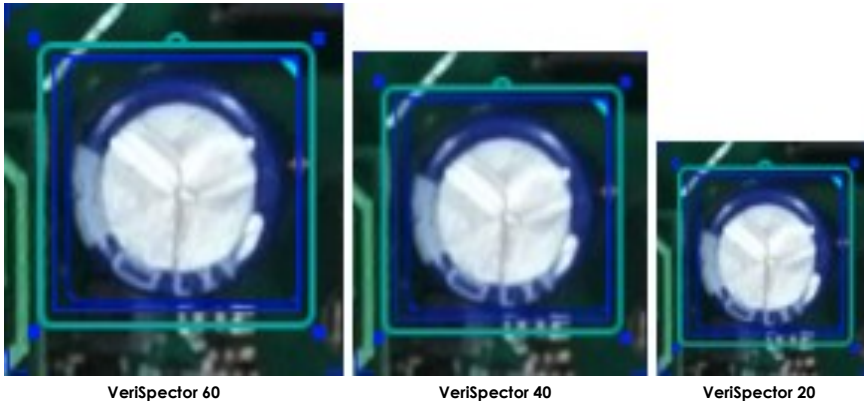
Making use of the **22x Software** ability to recognize text enables the **VeriSpector** to verify if text has been applied correctly.



Resolution adaptability to Specification needs

The VeriSpector can easily be integrated into a production floor using existing work tables. The frame is **adaptable** to different table sizes. With a selection of three different cameras the VeriSpector can be fine-tuned to the inspection requirements.

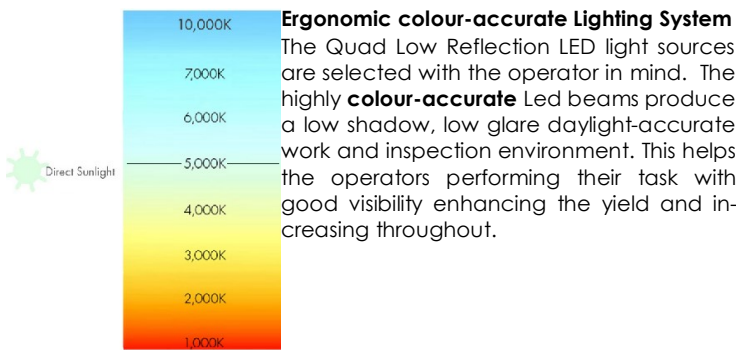
For example compare a 10 mm \varnothing electrolytic capacitor between different **VeriSpector** models as shown in the image below.



VeriSpector 60

VeriSpector 40

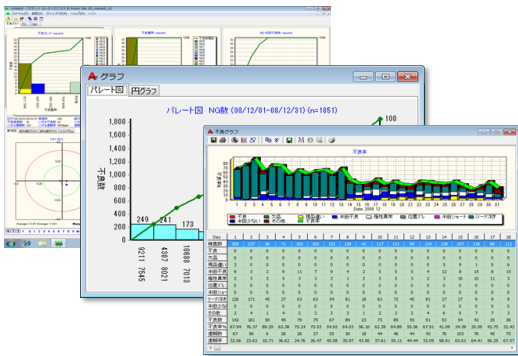
VeriSpector 20



Easy to use keyboard

With the VeriSpector we also introduce the fully pre-programmed keyboard specifically designed for **controlling** the system.

Connectivity and Traceability



Inspections can be tracked and traced together with a barcode that is read from the tested objects.

Base formats including **Datamatrix**, **QRcode**, **Code 128** and **Code 39**. As well as allowing multiple barcodes per fixture or panel.

For example the VeriSpector 20 is capable to read a **Datamatrix** of 20 characters with a size of approx. 10 mm, the VeriSpector 40 approx. 7 mm, and the VeriSpector 60 approx. 5 mm.



The **Catch System** which comprises of **CSCenter** for data collection, **CSRepair** for offline defect review and repair, **CSWatch** for real time data monitoring and **CSAnalyzer** for SPC and trend analysis. **PostgreSQL** enterprise grade database storage, is the total solution for quality control and improvement of the production process.





Assembly Station AOI

because inspection matters

Specifications	VeriSpector 20	VeriSpector 40	VeriSpector 60
PCB Size	Max Size: 750x500mm (29.5"x19.7") For smaller PCB sizes, optical zoom can be used to further increase the resolution:		
<i>Characteristics</i>			
Product type	1-Shot Stationary AOI		
Camera movement	Stationary		
PCB movement	Stationary		
Parts inspection	Presence, Orientation (polarity), Shape, Offset, Text, Color		
Image Processing	Synthetic Imaging, Spectral Histogram Analysis, Custom algorithms		
Camera/lens type	Digital Single Lens CMOS camera with high resolution optical zoom lens		
Sensor/Lens Resolution	24Mp / 2100LP	42Mp / 3600LP	60Mp / 3600LP
Lighting system	Quad Low Reflection LED system		
<i>System Specifications</i>			
Resolution @ 750x550mm PCB	125µm	94µm	79µm
Resolution @ 525x350mm PCB	88µm	66µm	47µm
Resolution @ 375x250mm PCB	63µm	47µm	39µm
Top Clearance above carrier	~1250mm		
Bot Clearance below carrier	45mm		
Carrying rails clearance	3mm		
Inspection speed typical	<5s per assembly		
Electrical requirements	100-240 VAC / 300W		
<i>Interfacing</i>			
Control PC type	Apple Mac Mini M1 or i5 OS11		
Data interface	USB		
Programming Interface	CSV Centroid file (Placement file)		
Repair/Monitor/SPC System/MES-interface	Mek Catch System (Windows 7/8/10) (option)		
3rd party Interfacing (MES) & Data Storage	Enterprise SQL DB/XML Files/Socket (Catch System Option)		
<i>General</i>			
Operating temperature	15-30 deg. C (60-90 deg. F)		
Operating humidity	15-80 % RH		
External size	W1600 x D655 x H1500 mm (63" x 26" x 59")		
Weight	60kg (133lbs)		

Represented/Distributed by:

Mek Americas LLC
8275 S Eastern Ave, suite 200
Las Vegas, NV 89123
T +1 702 660 6112

info@marantz-electronics.com
www.marantz-electronics.com

Mek Europe reserves the right to change the design and specifications without notice. © Mek Europe BV, 2021
Rev 14



Mek Europe BV
Polluxstraat 2b
5047 RB Tilburg, Netherlands
T +31 40 7114111
info@mek-europe.com
www.mek-europe.com