

## Keeping up with the Demand for Electronic Component Inventory Management

Demand for high-performance X-ray component counters continues to grow amidst the worldwide electronic component shortage. If you're not using x-ray for component counting then your manufacturing line has a higher risk of experiencing downtime from stock-outs and inaccurate inventory.

### Here's the good news;

**YOU** have the opportunity to dramatically reduce your cost of labor, increase efficiency, and improve profit margins with an XQuik X-ray Component Counter.

- + **Reduced cost of labor & error** – Push to start operation, simple interface, and AI powered component recognition leave little room for error.
- + **Greater productivity** - Extremely fast cycle times; <10 sec (including barcode scan) for XQuik III
- + **Higher inventory accuracy** – 99.8% across the widest range of standard and non-standard components
- + **Reliable data** - Real-time MES/ERP updates keep your stock under control and your lines up and running.
- + **Short ROI** – Lower cost, plug and play setup, <5 min operator training, and reduced lead times equals faster return.

## Why Choose VJ Electronix

VJE combines years of industry leadership, technical expertise, and product development knowledge to manufacture state-of-the-art x-ray and SMT rework systems. VJE is your one-stop source for intelligent solutions that boost the productivity of high-value, high-precision applications in electronics manufacturing and industrial markets worldwide. VJE is affiliated with VJ Technologies Inc., a global leader in x-ray technology.

### VJ Electronix, Inc.

Corporate Office:  
19 Alpha Road  
Chelmsford, MA  
01824 USA

1-978-486-4777  
[electronixsales@vjt.com](mailto:electronixsales@vjt.com)

[www.vjelectronix.com](http://www.vjelectronix.com)

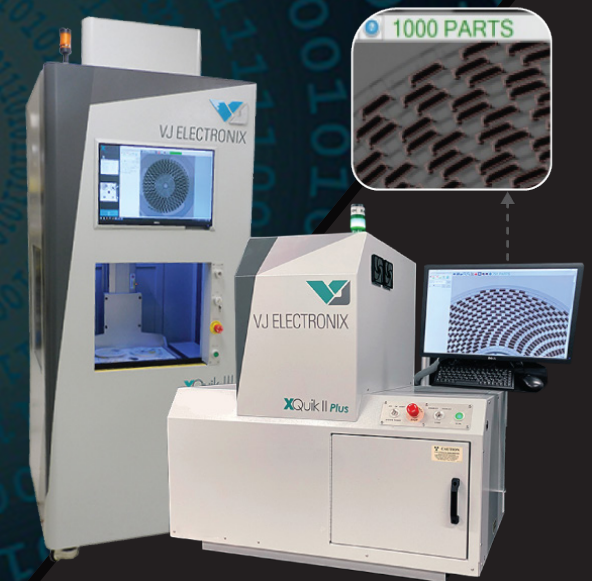
# XQUIK SERIES

## X-ray Component Counters

XQUIK III

XQUIK II PLUS

XQUIK II PLUS *AUTOLOAD*



 **VJ ELECTRONIX™**  
Process Control Solutions

CONFIDENCE DELIVERED

REWORK • X-RAY INSPECTION • COMPONENT COUNTING

# XQUICK PRODUCT COMPARISON

## Common Features & Specifications (All Counters):

- One-touch Operation
- AccuCount™ Software
- Auto Reel Detection
- Ultra-low Parallax Distortion
- Auto Component Counting
- Flexible MES/ERP Integration
- Microsoft Windows 10 OS
- Max. Reel Diameter: 15in or (4)7in
- Min. Component Size: 01005 (0402mm)
- Accuracy: > 99.8%
- Cabinet Shielding: <0.1 mR/hr (1.0 uSV/hr)
- Electrical Connection: 100–240 VAC
- Cert: CE, IEC, & FDA



XQuik II Plus	XQuik II Plus Autoload	XQuik III
<p><b>Cycle Time:</b> &lt;20 seconds ⬆️</p> <p><b>Detector Type:</b> Linear</p> <p><b>Max. Reel Height:</b> 2.4in(60mm)</p> <p><b>Automation:</b> Optional</p> <p><b>Lead Time:</b> 4-6 Weeks</p> <p><b>Bench-top Design</b></p> <p><b>High Resolution Imaging</b> ⬆️</p> <p><b>Additional Features:</b> Barcode Reader (Manual) Label Printer Portable Work Bench w/ Casters</p>	<p><b>Cycle Time:</b> &lt;30 seconds</p> <p><b>Detector Type:</b> Linear</p> <p><b>Max. Reel Height:</b> 2.4in (60mm)</p> <p><b>Automation:</b> Built-In ⬆️</p> <p><b>Lead Time:</b> 4-6 Weeks</p> <p><b>Bench-top Design</b></p> <p><b>Integrated Autoload/Unload</b> ⬆️</p> <p><b>High Resolution Imaging</b> ⬆️</p> <p><b>Safety Shield with Integrated Light Curtain</b></p> <p><b>Additional Features:</b> Barcode Reader (Manual or Auto) Label Printer Robotic Integration</p>	<p><b>Cycle Time:</b> &lt;10 seconds ⬆️</p> <p><b>Detector Type:</b> Flat Panel</p> <p><b>Max. Reel Height:</b> 4in (100mm)</p> <p><b>Automation:</b> Pass-through ⬆️</p> <p><b>Lead Time:</b> 4-6 Weeks</p> <p><b>Internal Barcode Scanner</b> ⬆️</p> <p><b>Touchscreen Display</b> ⬆️</p> <p><b>Enhanced Accuracy</b> ⬆️ (95% of reels counted at an accuracy &gt;99.8%)</p> <p><b>Floor Standing (Compact)</b> ⬆️</p> <p><b>Additional Features:</b> Label Printer Robotic Integration Adjustable Height Monitor Automatic Shutters ⬆️</p>

⬆️ Enhancement from previous model

## Options: XQuik II Plus

Waffle Pack Component Counting Software and Multi-pack Tray
24" High Resolution Flat Panel LCD Display in Lieu of Standard Monitor
Bar Code Reader (Manual)
Label Printer - Dymo LabelWriter 450
Black Work Bench, 30x48x25/32.5H, Leveling Feet, PC Shelf, Shipping Box
Black Workbench with Casters
Monitor/Keyboard Mount
Automation Side Panel Interface Kit

## Options: XQuik II Plus Autoload

24" High Resolution Flat Panel LCD Display in Lieu of Standard Monitor
Bar Code Reader (Manual or Automatic)
Label Printer - Dymo LabelWriter 450
Black Work Bench, 30x48x25/32.5H, Leveling Feet, PC Shelf, Shipping Box

## Options: XQuik III

Adjustable Height Mount 24" High Resolution Flat Panel LCD Display
Label Printer - Dymo LabelWriter 450
Pass-through Automation/ Robotic Integration (Application Specific)